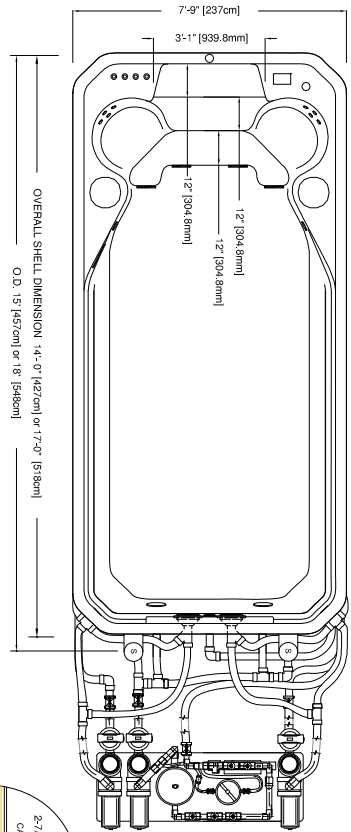


COMMERCIAL 14' and 17' SWIM IN PLACE EXERCISE POOL

SHELL DIMENSIONS

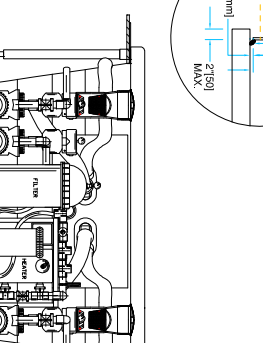
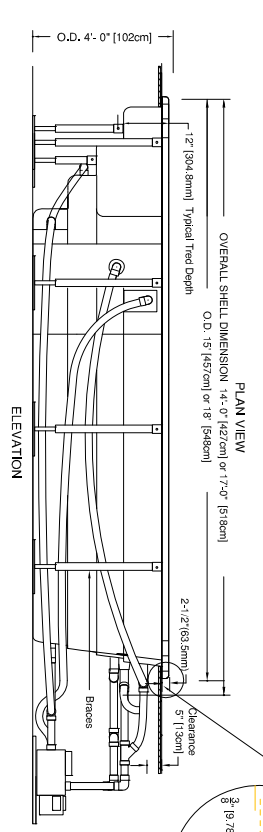
LENGTH	WIDTH	HEIGHT
14'-0" (427 cm)	7'-9" (237 cm)	4'-0" (122 cm)
17'-0" (518 cm)	7'-9" (237 cm)	4'-0" (122 cm)



VOLUME	WEIGHT/FILL	WEIGHT EMPTY
@1706 GJ / 6498 Lt	15500 lbs / 7026 kg	1200 lbs / 545 kg
@2208 GJ / 8357 Lt	19900 lbs / 9026 kg	1800 lbs / 816 kg

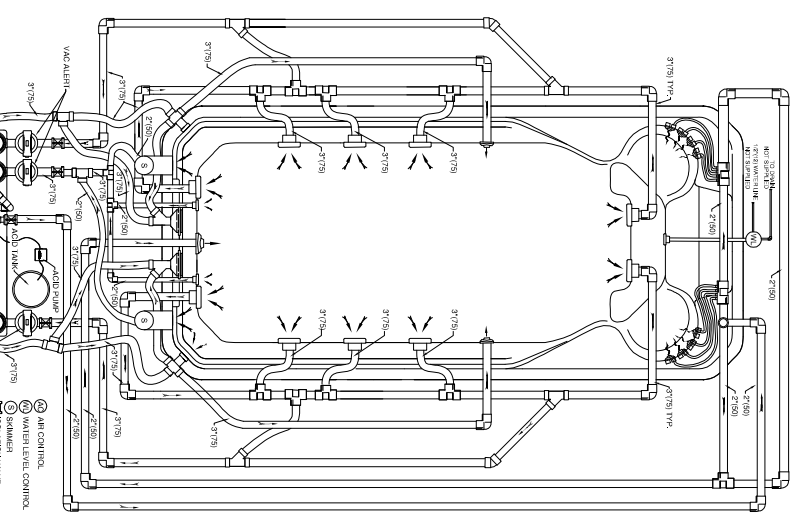
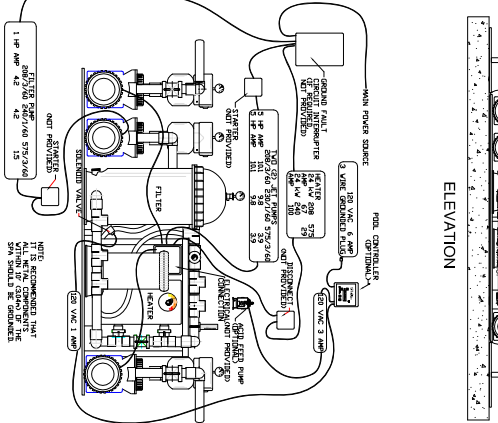
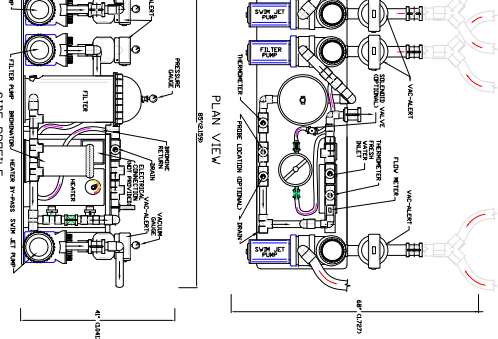
All equipment UL and UL-C approved.

14' SPECIFICATIONS		17' SPECIFICATIONS	
SPA VOLUME	1706 usg	SPA VOLUME	2208 usg
TURNOVER	6457 L/hr	TURNOVER	8357 L/hr
FLOW RATE	15.07 (1457 cm ³) / 7.91 (237 cm)	FLOW RATE	21.5 (205 cm ³) / 12.1 (368 cm)
OPERATING @	285 usg/m ² sq.ft.	OPERATING @	285 usg/m ² sq.ft.
RE-CIRCULATION FLOW RATE	74 usg/m ² sq.ft.	RE-CIRCULATION FLOW RATE	74 usg/m ² sq.ft.
BOOSTER PUMPS FLOW RATE	101 usg/m ² sq.ft.	BOOSTER PUMPS FLOW RATE	101 usg/m ² sq.ft.



SPECIFICATIONS

- The shell of the hot tub shall be manufactured of vacuum formed acrylic. See dimensional information on this sheet.
- The acrylic shall be further reinforced with fiberglass rebar adjustable support legs mated to steel sockets built into the structure of the shell.
- The shell shall have the following fittings:
 - Air Control Valves
 - Hydrotherapy Jets
 - Wide mouth skimmer (N.S.F. Listed)
 - Summer Current Spray Jets
 - Spout Current Spray Jets (ANSI/ASME A112.19.1M Listed)
 - Thigh Exercise Jets
 - Water level tank fitting with remote water level control tank
 - The hot tub will be insulated with a coating of polyurethane foam, factory plumbed and hydraulically tested.
- Apurater mechanical support system recommended package will be shipped on a separate plastic base and shall consist of:
 - This filter pump (N.S.F. Listed)
 - 200 sq.ft. cartridge filter (N.S.F. Listed)
 - 24 kW electric heater w/ flow switch
 - Line Thermometer w/ flow switch
 - Line Chemistry Controller
 - Line Heater (N.S.F. Listed with generally closed solenoid valve)
 - Blow Heater (N.S.F. 15 gal solution tank w/ heater)
 - Water level controller with overflow located at the shell
 - VA2000 Vacuum Release device (ANSI A112.19.17-2002 Listed)
- Optional manual with anchor and scuba/snorkel plates, or deck lamps.
- Warranty shall be 5 years on the shell structure, 2 years on the acrylic surface and one year on the plumbing, mechanical equipment and accessories. On-site plumbing is NOT covered.
- Installation items NOT covered by this specification and considered by others' are:
 - Plumbing between the spa shell and mechanical equipment location.
 - Electrical connections, motor, heater and component connections including motor starters or any grounding of electrical components.
 - Decking and access steps including deck drains.
 - Supports under the seats and steps of the shell.



This drawing and the ideas, concepts, illustrative and written information represented hereby are the confidential property of HYDROTHER. Reproduction of all or any part of this drawing or plans thereof, or any other confidential and proprietary information contained herein without the permission of HYDROTHER, is forbidden.

No.	Date	Description	Checked by
1	03-20-08	Checked by SHB	

HYDROTHER
 135 MATHEWSON BLVD. E.
 MISSISSAUGUA, ONTARIO
 CANADA
 L4Z 1R2
www.hydrother.com

Project: **Hydrother 2008 Water Vapor Swim In Place Exercise Pool 14' and 17' Model**
 Scale: 1/4" = 1'-0"
 Date: Sept. 20/07
 Drawn by: SHB
 App. No.: 8002007



NOTE: The mechanical system may be modified to suit project requirements. Section 1-5 - 1.615 NOT applicable if equipment is supplied by others.